

# CENTERLINE SURVEY PLAT

BEL-70-20.00

BELMONT COUNTY, OHIO

0 200 400  
SCALE IN FEET

CAB D-SLIDE 93  
SHEET 1 OF 2 SHEETS

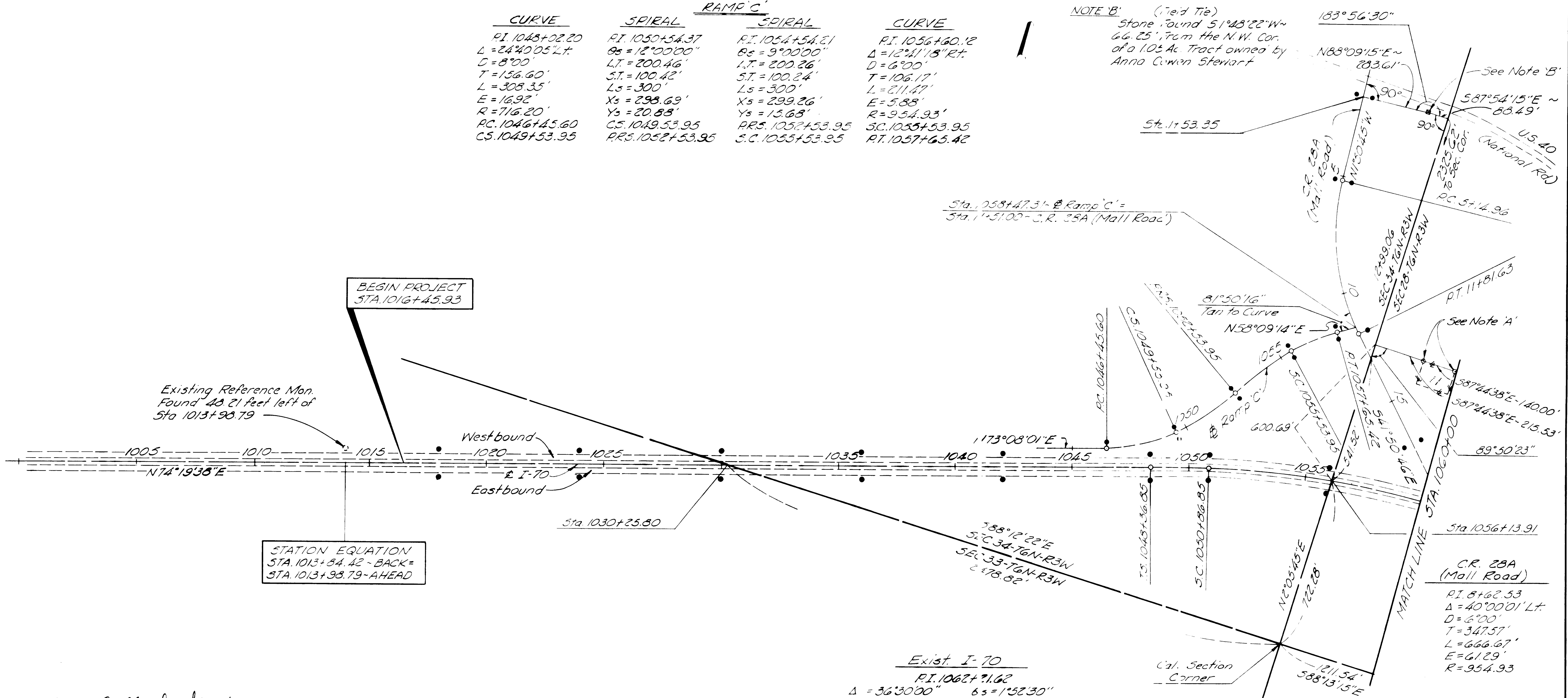
29 306  
320

1  
15

CURVE	SPIRAL	RAMP 'C'	SPIRAL	CURVE
P.I. 1048+02.20	P.I. 1050+54.37	P.I. 1054+54.21	P.I. 1056+60.12	
$\Delta = 24^{\circ}40'05''$ L.T.	$\Delta = 12^{\circ}00'00''$	$\Delta = 9^{\circ}00'00''$	$\Delta = 12^{\circ}41'18''$ R.T.	
D = 8'00'	L.T. = 200.46'	L.T. = 200.26'	D = 6'00'	
T = 156.60'	S.T. = 100.42'	S.T. = 100.24'	T = 106.17'	
L = 308.35'	Ls = 300'	Ls = 300'	L = 211.47'	
E = 16.92'	Xs = 298.69'	Xs = 299.26'	E = 5.88'	
R = 716.20'	Ys = 20.83'	Ys = 15.68'	R = 954.93'	
P.C. 1046+45.60	C.S. 1049.53.95	P.R.S. 1052+53.95	S.C. 1055+53.95	
C.S. 1049+53.95	P.R.S. 1052+53.95	S.C. 1055+53.95	P.T. 1057+65.42	

NOTE 'A' (Field Tie)  
Copperweld rod in concrete mon.  
found at the N.E. & N.W. corners of Lot 11  
in Grandview Heights Subdivision  
P.B. 11 Page 41

NOTE 'B' (Field Tie)  
Stone found 51'48"22"W  
66.25' from the N.W. Cor.  
of a 105 Ac. Tract owned by  
Anna Cowan Stewart



Existing Reference Mon.  
Found 48.21 feet left of  
Sta 1013+98.79

BEGIN PROJECT  
STA. 1016+45.93

STATION EQUATION  
STA. 1013+84.42 - BACK =  
STA. 1013+98.79 - AHEAD

Exist. I-70  
P.I. 1062+91.62  
 $\Delta = 36^{\circ}30'00''$      $\Delta = 1^{\circ}52'30''$   
Dc = 130'00"    Lt = 166.68'  
Ls = 250.00'    St = 83.34'  
Ts = 1384.77'    Lc = 2153.73'  
Lc = 2183.33'    Lc = 32'45'00"  
Es = 203.03'    Xs = 249.97'  
Rc = 3819.72'    Ys = 2.73'

C.R. 28A  
(Mall Road)  
P.I. 8+62.53  
 $\Delta = 40^{\circ}00'01''$  L.T.  
D = 6'00'  
T = 347.57'  
L = 666.67'  
E = 61.29'  
R = 954.93

SIGNED C. Clark Street  
DATE 9-16-77 DISTRICT DEPUTY DIRECTOR  
\* 136725

RECEIVED SEPT. 16, 1977  
RECORDED OCT. 3, 1977  
BOOK 15 PAGE 29  
Stanley Simonis  
COUNTY RECORDER

\$50.00 FEE PAID

Approved for Record by  
Fred F. Bennett, Belmont County Engineer  
Date Sept. 16, 1977  
Fred F. Bennett  
Fred F. Bennett

• REFERENCE MONUMENTS

I HEREBY CERTIFY THAT THIS PLAT IS A TRUE  
REPRESENTATION OF A SURVEY MADE FOR THE  
OHIO DEPARTMENT OF TRANSPORTATION  
IN 1977 BY Stanley Simonis  
DATE 9/1/77 REGISTERED SURVEYOR  
No. 4710

