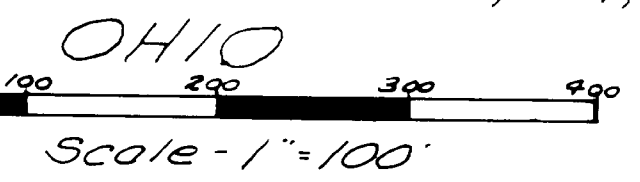


# RICHLAND ACRES ADDITION

Belmont County, Richland Township, Part of Southwest Quarter of Section No. 2, T.7, R.4



**LEGEND**  
 U.E. = Utility Easement  
 --- = Easement Lines  
 --- = Building Lines  
 --- = Solid Iron Pins Set  
 ● = Concrete Monuments Set

**CURVE DATA**

No.	TAN	RAD.	LOW CHORD	BEARING ON CHORD	ARC DISTANCE
A	88°59'40"	18.40	26.44	N.41°07'10" W	29.24'
B	91°50'20"	19.14	26.63	N.48°52'50" E	29.72'
C	84°36'40"	25.00	27.45	N.39°21'40" W	40.55'
D	21°20'	30.00	34.78	N.43°08'20" E	66.99'

Note: All distances shown on curves are long chord distances.

### CERTIFICATE OF SURVEYOR

The within plat is a subdivision of 34.423 acres of which 16.674 acres were conveyed to Sylvan Regoli by Viola M Sykes, single, by deed dated December 18, 1973 and recorded in deed volume 543 at page 456 of the deed records of Belmont County, Ohio and of which 17.749 acres were conveyed to Filbert Regoli by Viola M Sykes, single by deed dated December 18, 1973 and recorded in deed volume 543 at page 454 of the deed records of Belmont County, Ohio.

Acresage contained in dedicated roads is 2.360 acres.  
 Acresage contained in lots 1 thru 9 is 51.654 acres.  
 Acresage contained in out-lots 1, 2, 3 and 4 is 22.409 acres.  
 Total acresage is 34.423.

I, hereby certify that this plat is a true and correct survey made by me on Sept. 27, 1975, that all 6" inch concrete monuments and solid iron pins have been set as shown.

Walter J. Stewart  
 Ohio Registered Surveyor No. 4693

### OWNER'S CONSENT & DEDICATION

We, the undersigned Sylvan Regoli and Margot L. Regoli, owner of a 16.674 acre tract of which this subdivision is a part of and Filbert Regoli and Blanche E. Regoli, owner of a 17.749 acre tract of which this subdivision is a part of, do hereby voluntarily consent to the execution and recording of the said plat and do dedicate the streets as shown hereon to the public use forever. We also hereby dedicate easements to run with land for water, sewer, gas, electric, telephone, or other public utility lines or services under, on or over those certain strips of land designated hereon as "UTILITY EASEMENTS".

We further agree that this dedication shall be a covenant binding ourselves, our heirs and assigns forever, to which we affix our signatures this 13th day of September, 1975.

WITNESSED BY:

### NOTARY PUBLIC

The State of Ohio, Belmont County, ss:  
 Be it remembered that on this 13th day of September, 1975, before me the undersigned, a notary public in and for said county and state, personally came Sylvan Regoli, Margot L. Regoli, Filbert Regoli and Blanche E. Regoli, who acknowledged that they did sign the foregoing plat and that the same is their free act and deed.

In testimony whereof I have set my hand and notary seal on this day and date above written.

### COUNTY ENGINEER

Approved for Record: \_\_\_\_\_  
 Date: June 15, 1976  
 Belmont County Engineer

### COUNTY COMMISSIONERS

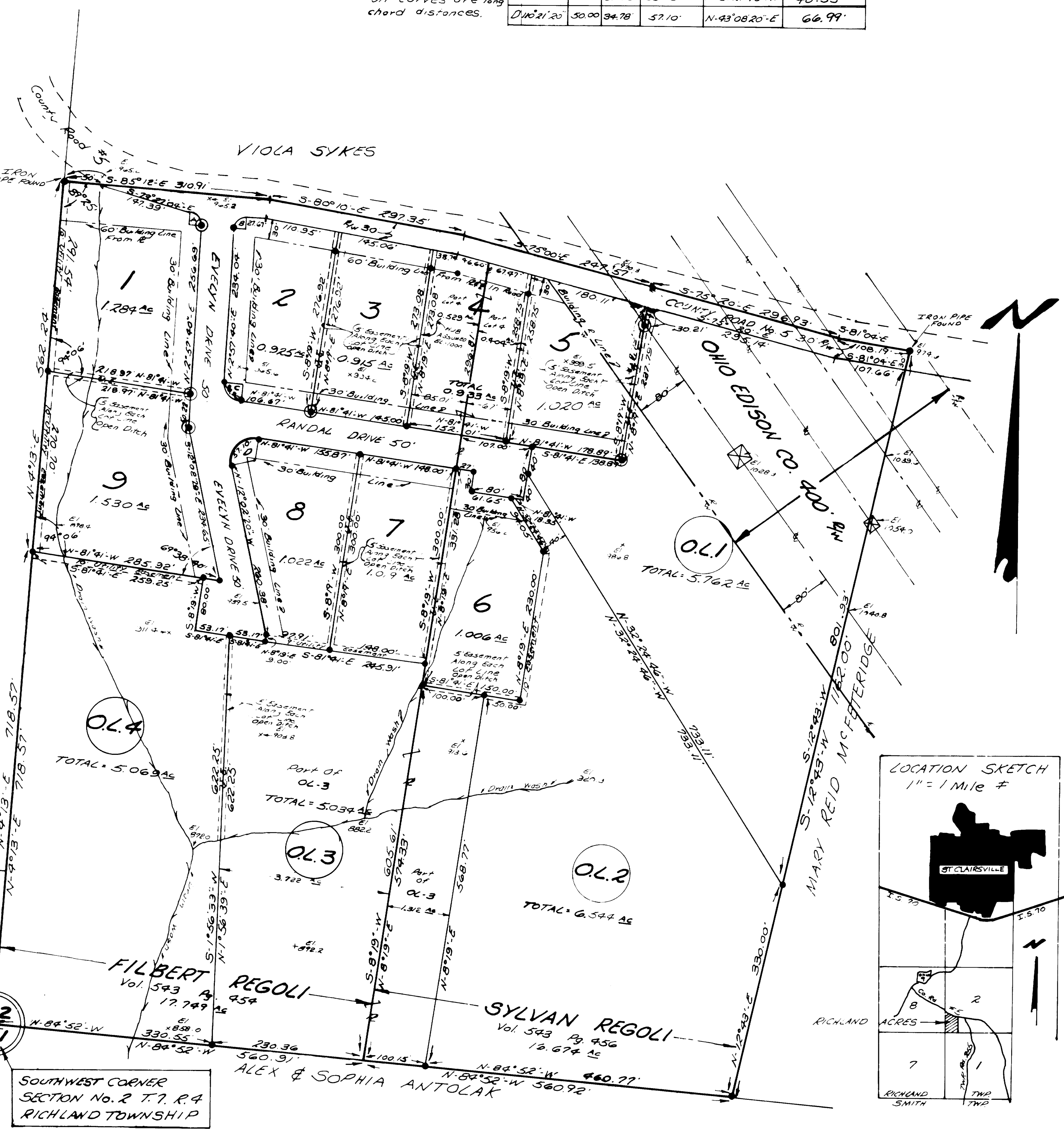
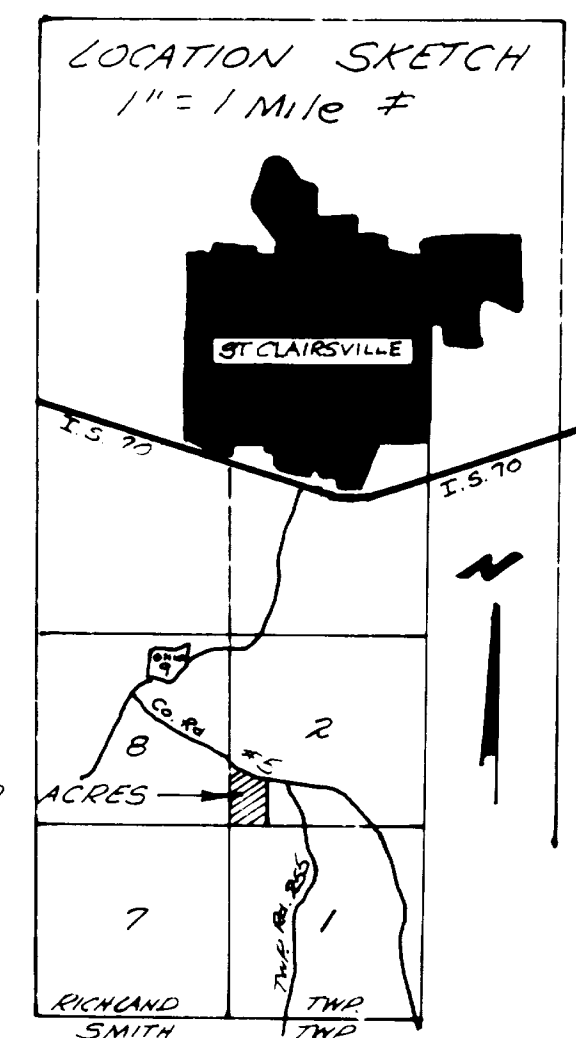
Approved for Record, subject to the rules and regulations governing the platting of subdivisions of land, BELMONT COUNTY COMMISSIONERS

### COUNTY AUDITOR

H.O. Hall is: P. Castiglione  
 Transferred by Belmont County Auditor  
 Date: June 15, 1976 Fee \$3.50 PAID

### COUNTY RECORDER

No. 127819  
 Received for Record JUNE 16, 1976, at 1:00 o'clock P.M.  
 Recorded JUNE 28, 1976  
 in Belmont County Record of Plats.  
 Volume 15, Page 11  
 \$ 25.00 FEE PAID



SOUTHWEST CORNER SECTION No. 2 T.7, R.4 RICHLAND TOWNSHIP