

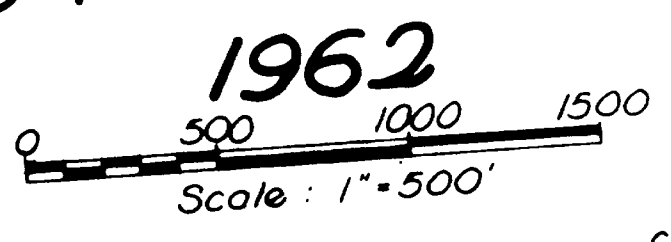
LOCATION PLAN

BEL-40-7.79
BELMONT COUNTY
UNION TWP SEC'S 2, 8, 14, 20 & 26, T-8-N, R-5-W
RICHLAND TWP SEC. 33, T-7-N, R-4-W

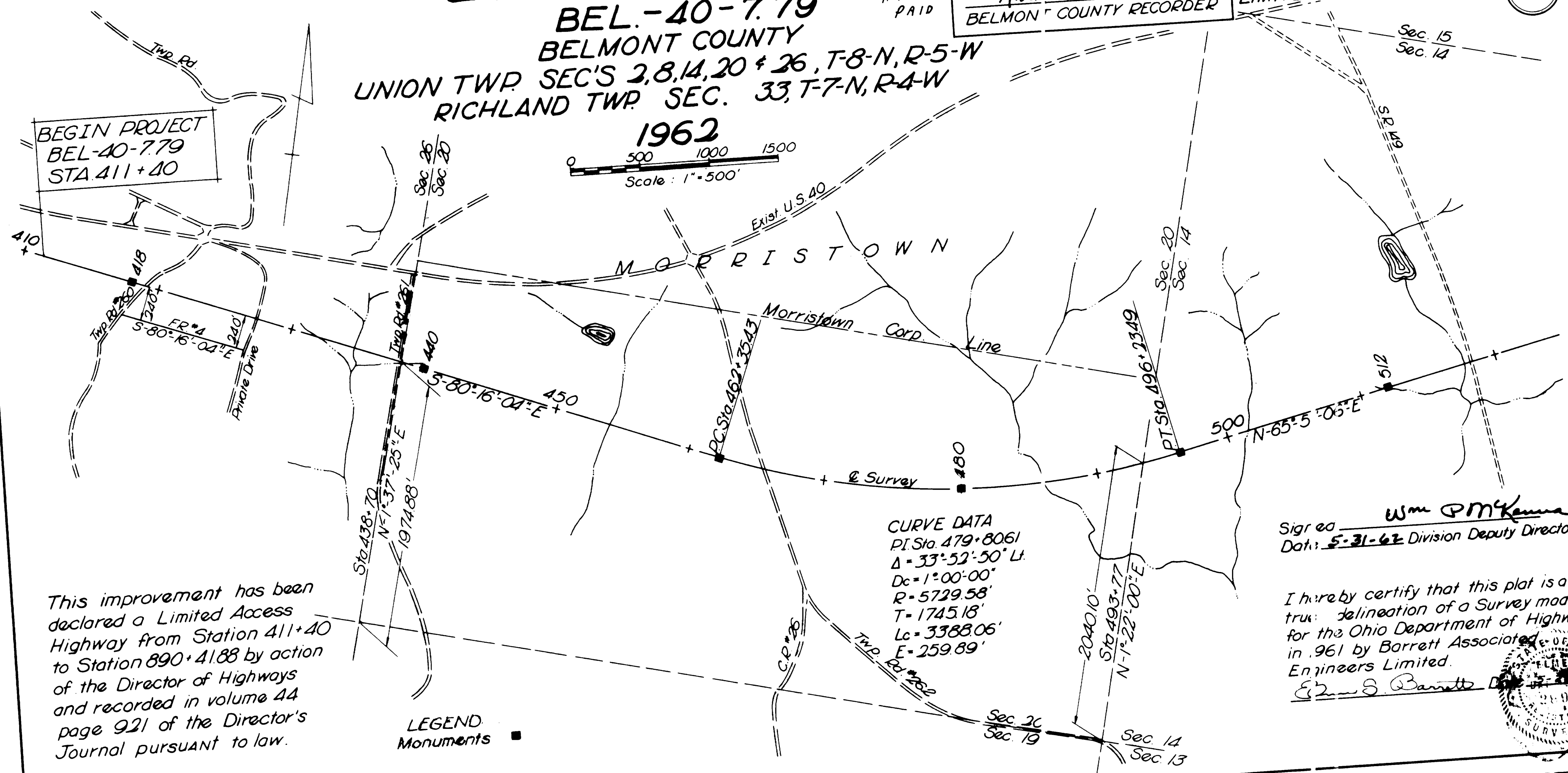
RECEIVED JUNE 12 1962
RECORDED 10:14 AM 6/12/1962
BOOK L? PAGE 21
Ned Munas
BELMONT COUNTY RECORDER

| | | |
|-------------------|----------|-------------|
| FED. RD. DIVISION | ST. / E. | PROJECT |
| 2 | 0A 10 | BEL-40-7.79 |

LIMITED ACCESS



BEGIN PROJECT
BEL-40-7.79
STA 411+40



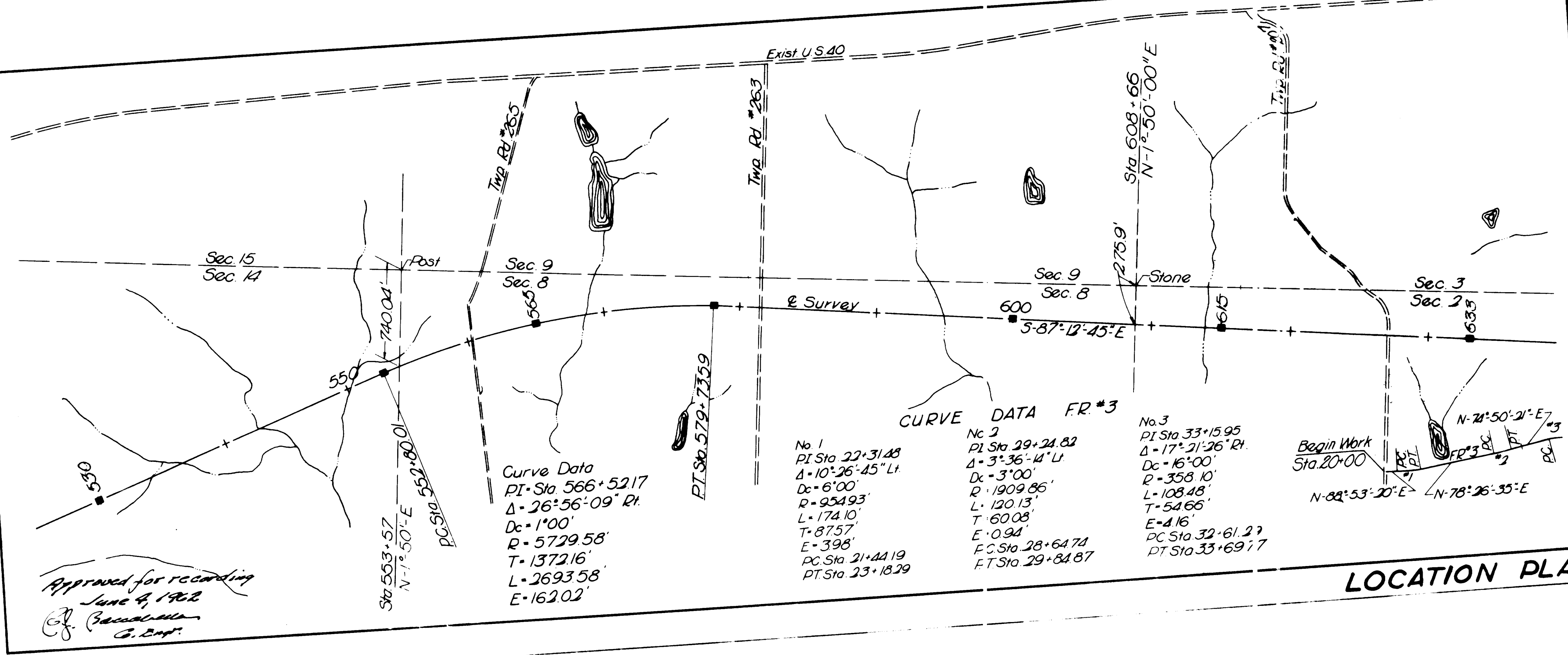
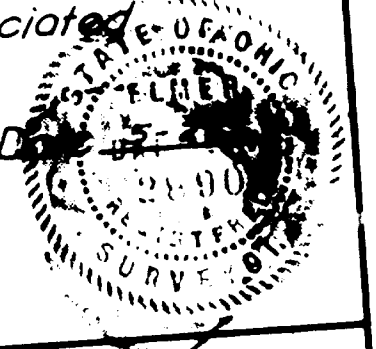
This improvement has been declared a Limited Access Highway from Station 411+40 to Station 890+41.88 by action of the Director of Highways and recorded in volume 44 page 921 of the Director's Journal pursuant to law.

LEGEND
Monuments ■

CURVE DATA
PI Sta 479+8061
Δ = 33°52'50" Lt.
Dc = 1°00'00"
R = 5729.58'
T = 1745.18'
Lc = 3388.06'
E = 259.89'

Signed Wm P. Munas
Dat: 5-31-62 Division Deputy Director

I hereby certify that this plat is a true delineation of a Survey made for the Ohio Department of Highways in 1961 by Barrett Associated Engineers Limited.



Curve Data
PI Sta 566+5217
Δ = 26°56'09" Rt.
Dc = 1°00'
R = 5729.58'
T = 1372.16'
L = 2693.58'
E = 162.02'

No 1
PI Sta 22+31.48
Δ = 10°26'45" Lt.
Dc = 6°00'
R = 954.93'
L = 174.10'
T = 87.57'
E = 3.98'
PC Sta 21+44.19
PT Sta 23+18.29

CURVE DATA FR #3
No 2
PI Sta 29+24.82
Δ = 3°36'14" Lt.
Dc = 3°00'
R = 1909.86'
L = 120.13'
T = 60.08'
E = 0.94'
PC Sta 28+64.74
PT Sta 29+84.87

No 3
PI Sta 33+15.95
Δ = 17°21'26" Rt.
Dc = 16°00'
R = 358.10'
L = 108.48'
T = 54.66'
E = 4.16'
PC Sta 32+61.27
PT Sta 33+69.77

Begin Work
Sta 20+00
N-82°53'20"E
N-78°26'35"E

Approved for recording
June 4, 1962
G. Eng.

LOCATION PLAN