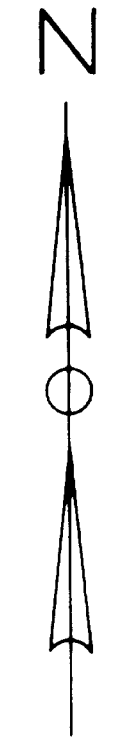


LOCATION PLAN

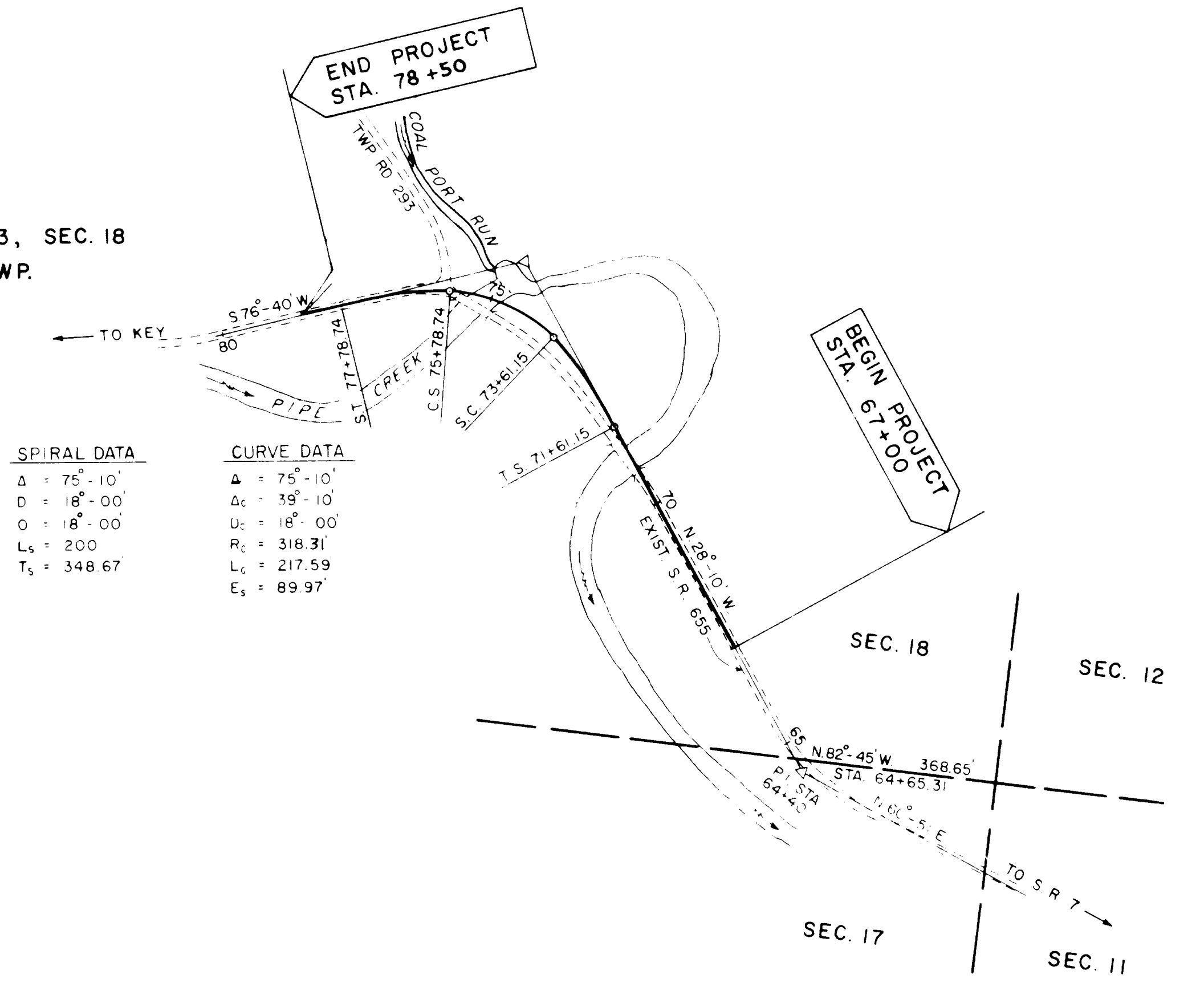
BEL-655-1.25

1962

SCALE: 1" = 200



T-4, R-3, SEC. 18
MEAD TWP.



SPIRAL DATA

Δ	= 75°-10'
D	= 18°-00'
O	= 18°-00'
L _s	= 200
T _s	= 348.67

CURVE DATA

Δ	= 75°-10'
Δ _c	= 39°-10'
D _c	= 18°-00'
R _c	= 318.31
L _c	= 217.59
E _s	= 89.97

#42939
 Recd for Record April 9, 1962.
 at 11:22 o'clock A.M.
 Recorded April 9, 1962.
 in Belmont County Record
 of Plats, Volume 12, Page 15.

Niel Minnas, Recorder
 \$1125 Paid

SIGNED Wm McKenna
 DATE 3-12-62 DIVISION DEPUTY DIRECTOR

I HEREBY CERTIFY THAT THIS PLAT
 IS A TRUE DELINEATION OF A SURVEY
 MADE FOR THE OHIO DEPARTMENT OF
 HIGHWAYS IN Oct & Dec 1961
 BY Peace Associates of Ohio

Edward J. Paula DATE 11 Jan 1962

CENTER LINE MONUMENT ASSEMBLIES WILL BE
 SET ON THE CENTER LINE DURING CONSTRUCTION
 AT THE FOLLOWING STATIONS.

- STA. 67+00
- STA. 71+61.15
- STA. 73+61.15
- STA. 75+78.74
- STA. 77+78.74

2/24/62
 Approved for Recording
E. J. Green
 Belmont County Engr.