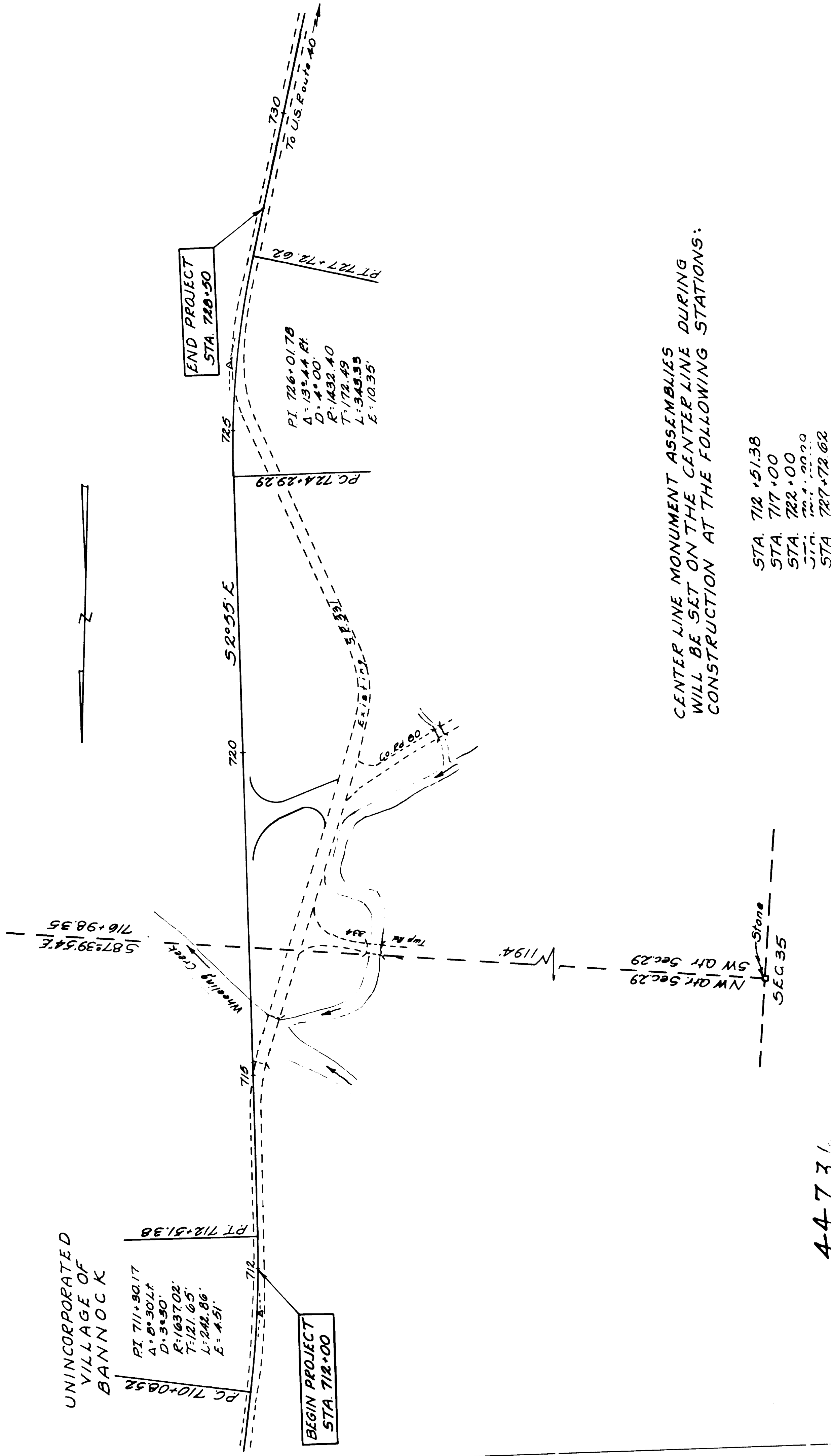


LOCATION PLAN BEL - 331 - 13.46

1961

SCALE: 1" = 100'



CENTER LINE MONUMENT ASSEMBLIES
WILL BE SET ON THE CENTER LINE DURING
CONSTRUCTION AT THE FOLLOWING STATIONS:

- STA. 712 +51.38
- STA. 717 +00
- STA. 722 +00
- STA. 726 +01.70
- STA. 727 +72.62

44734

COUNTY RECORDER
 Received for Record 9 1961
 at 10:40 O'clock T.U.N.E
 Recorded T.U.N.E 9 1961 in the
 Belmont County Record of Plats,
 Plat Book No. 12 Page 3

Fee \$ 11.25 - Phil Neish County Recorder

COUNTY ENGINEER
 Approved for Recording by the Belmont County
 Engineer this 9th day of June 1961

R. J. Baccala
 County Engineer

I hereby certify that this plat is correct
 to the best of my knowledge and belief.
Wm. G. McKeown
 Division Engineer
5-25-61
 Date